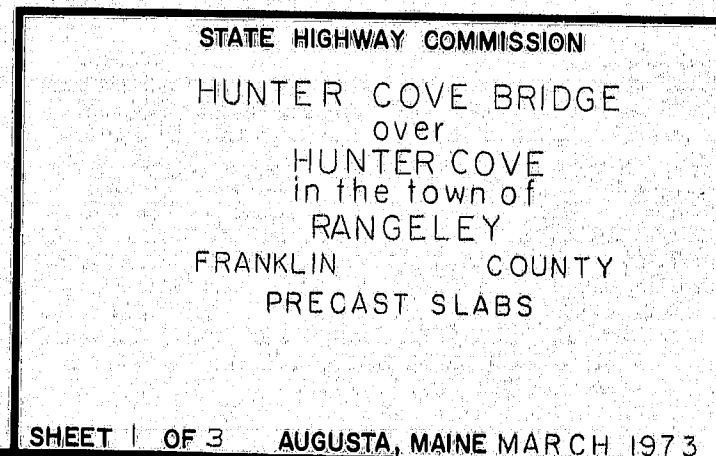


PLANS	DESIGN - DETAILED	BY	DATE
	CHECKED	<i>CLM/bose</i>	3-73
	REVISIONS	<i>L.A. DOWLE</i>	3-73
	FIELD CHANGES		

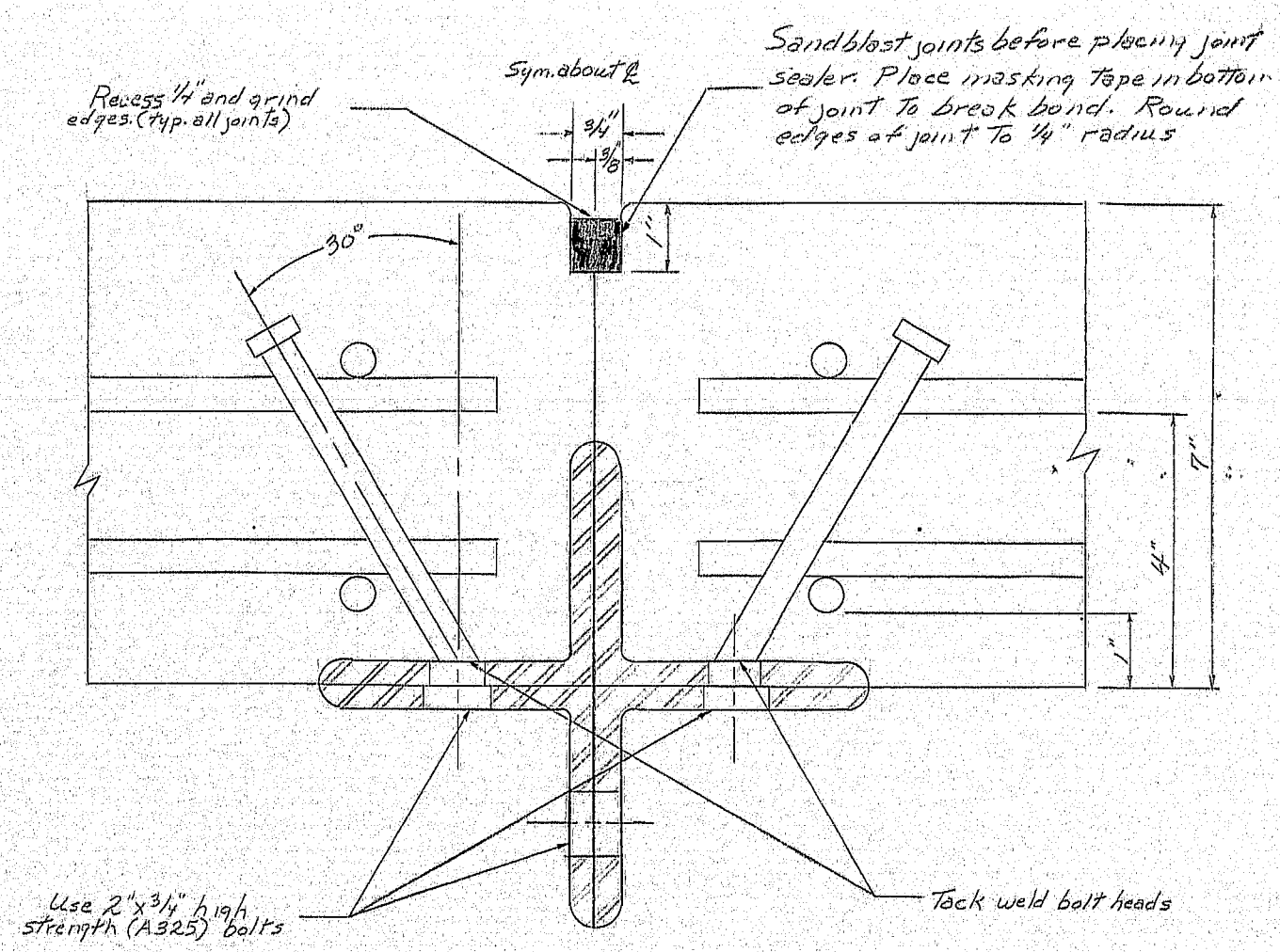
PLANS



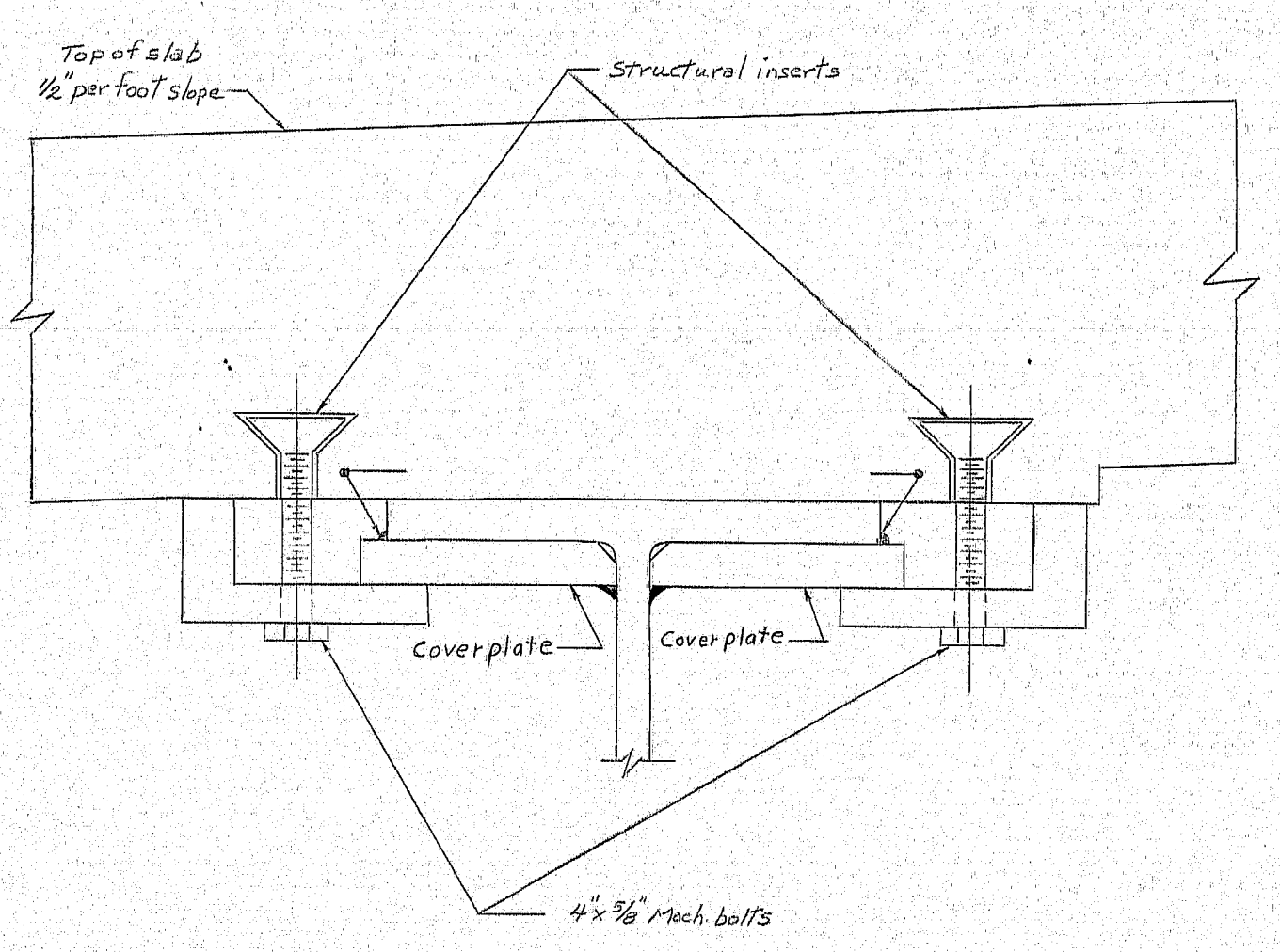
SHEET 1 OF 3 AUGUSTA, MAINE MARCH 1973
42-152 203-1 20

142-152

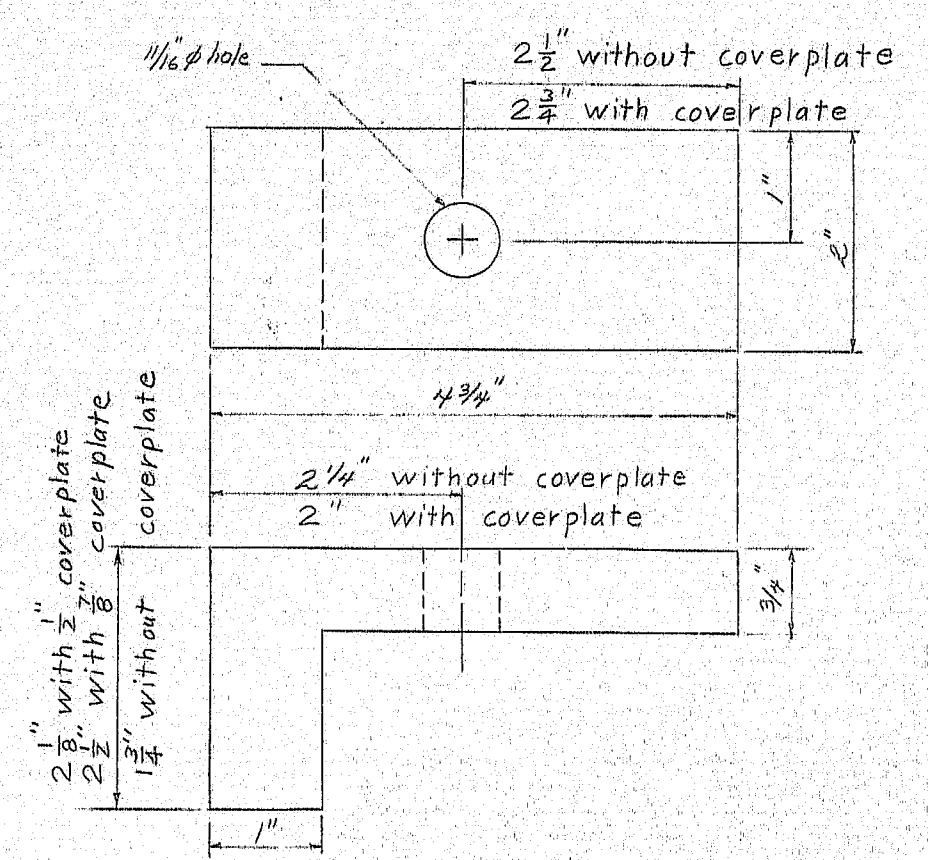
F.W.A. REL. NO.	STATE	PROJECT NUMBER	SHEET NO.	TOTAL SHEETS
1	MAINE	2384	2	2



TRANSVERSE JOINT

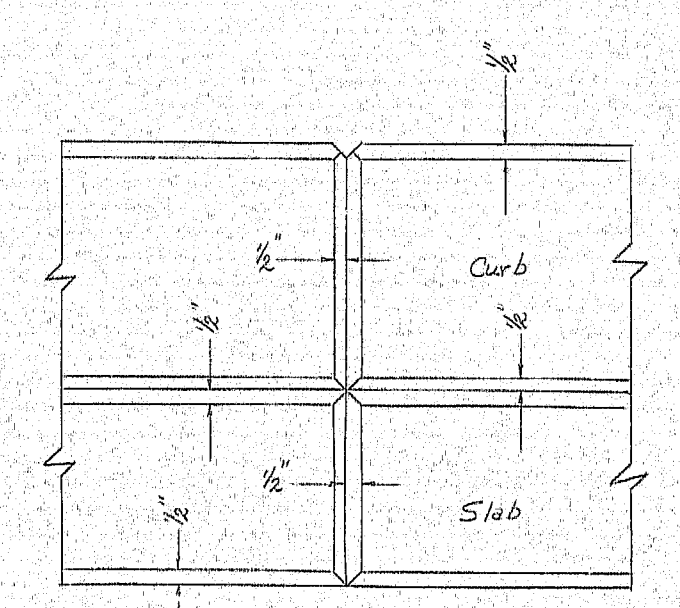


SLAB HOLD DOWN DETAIL-A



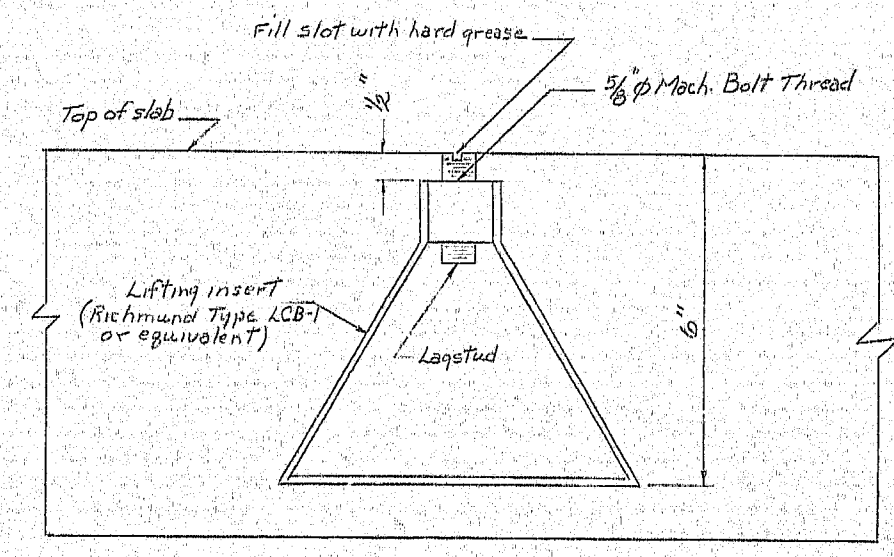
Note: Clamps to be made of A36 steel. Clamps may be made in one piece or in two pieces and then welded solidly.

SLAB HOLD DOWN CLAMP



Note: Construct V-groove on both sides of top of curb over each slab joint. 1/2 inch chamfer all exposed edges.

CHAMFER DETAIL



LIFTING INSERT DETAIL

Reinforcing Schedule

Mark	Size	Number	Length	Location
401	#4	312	8'-11"	Longitudinal
501*	#5	75	26'-6"	Transverse
502	#5	245	24'-6"	Transverse
503*	#5	6	25'-4"	End Thickness
601	#6	8	18'-9"	Curb
602	#6	2	9'-11"	Curb
603	#6	8	11'-7"	Curb
604	#6	2	5'-7"	Curb

* Bent Bars
Reinforcing steel to be in intermediate grade.
All dimensions to center of bar.

Bill of Material

Structural Items:

- 240 Pieces 2 Iron 3 1/2" x 4" x 3/8" x 3'-9"
- 960 Studs 5 1/2" x 1/2"
- 960 Bolts, Nuts & Washers - A-325 - 2" x 3/4"
- 44 5/8" x 8" Galv. mech. bolt & nut
- 88 Galv. washers
- 41 Feet 3/4" Galv. pipe
- 64 Lifting inserts - Richmond - LCB-1
- 320 Hold Down Clamps (See structural item note below)
- 320 Hold Down Inserts - Richmond - 7/8" PLW
- 320 Bolts 4" x 5/8" mech. bolts

Concrete:

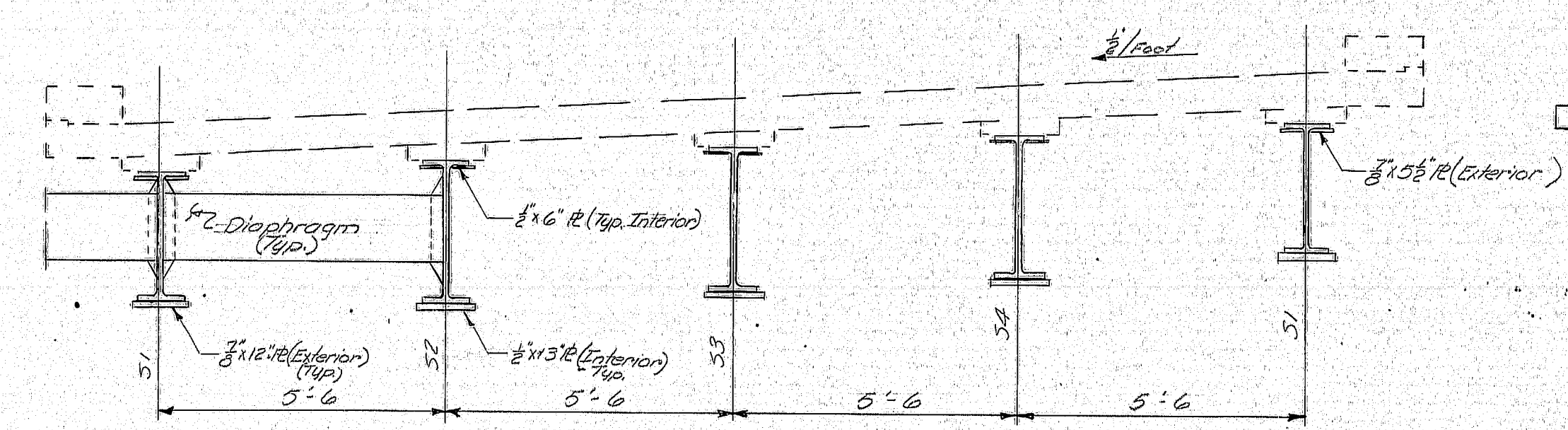
- 2.4 Cubic yards Ave. per panel 9646 lbs #/panel
- 58.1 Cubic yards for 81 for panels
- 1.9 Cubic yards for curbs

Structural Item Note:

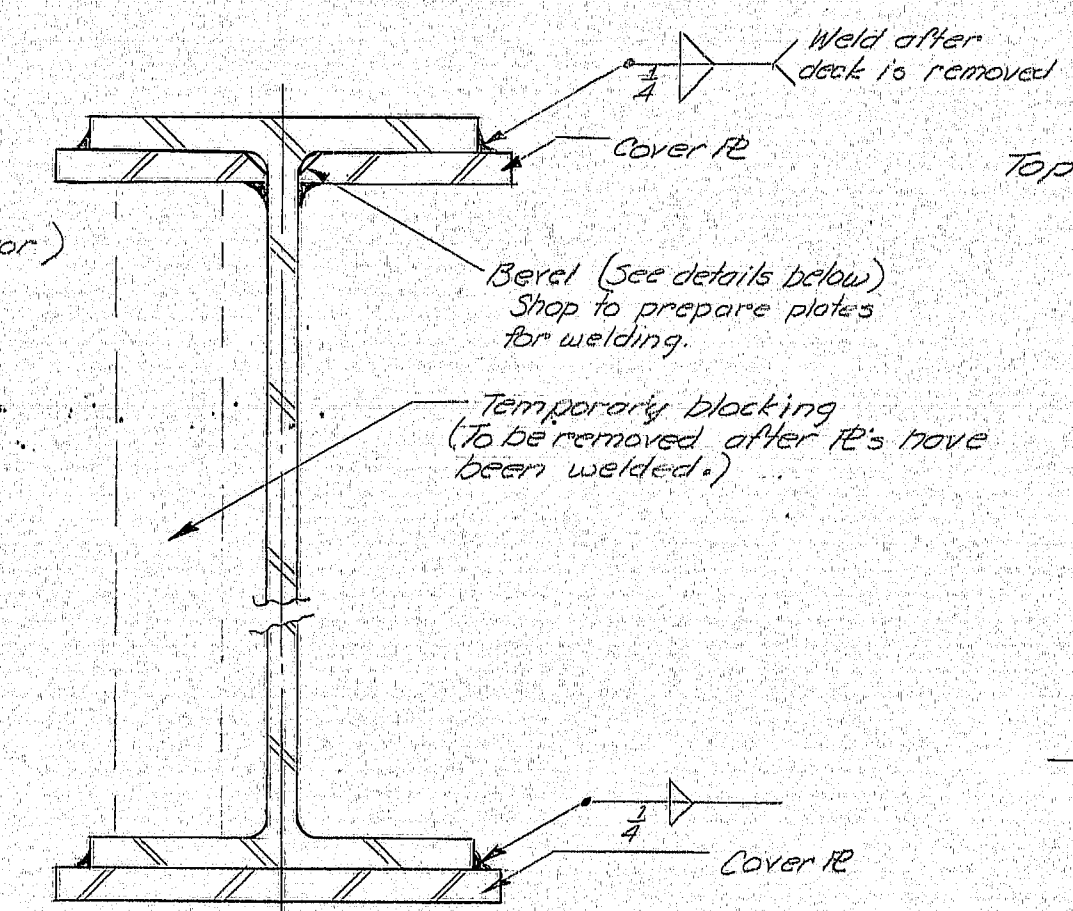
- 108 Hold Down Clamps with 1/2" Coverplate
- 80 Hold Down Clamps with 3/8" Coverplate
- 132 Hold Down Clamps without Coverplate
- 6 1/2" x 6" x 37'-0" R
- 4 1/2" x 5 1/2" x 22'-0" R
- 3 1/2" x 13" x 39'-0" R
- 2 1/2" x 12" x 47'-0" R

STATE OF MAINE
DEPARTMENT OF TRANSPORTATION
HUNTER COVE BRIDGE
over
HUNTER COVE
in the town of
RANGELEY
FRANKLIN COUNTY
TYPICAL DETAILS
SHEET 2 OF 3 AUGUSTA, MAINE MARCH 1973

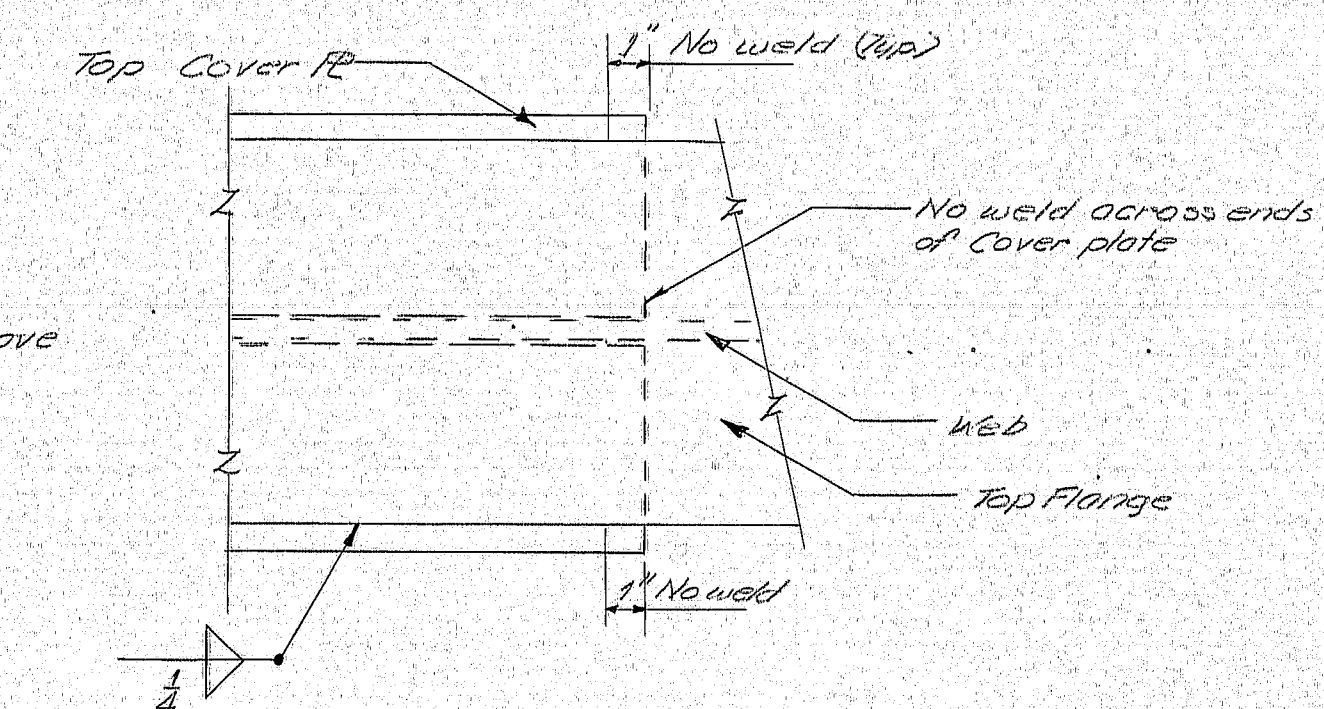
STATE	PROJECT NUMBER	SHEET NO.	TOTAL SHEETS
MAINE	E3354	1	1



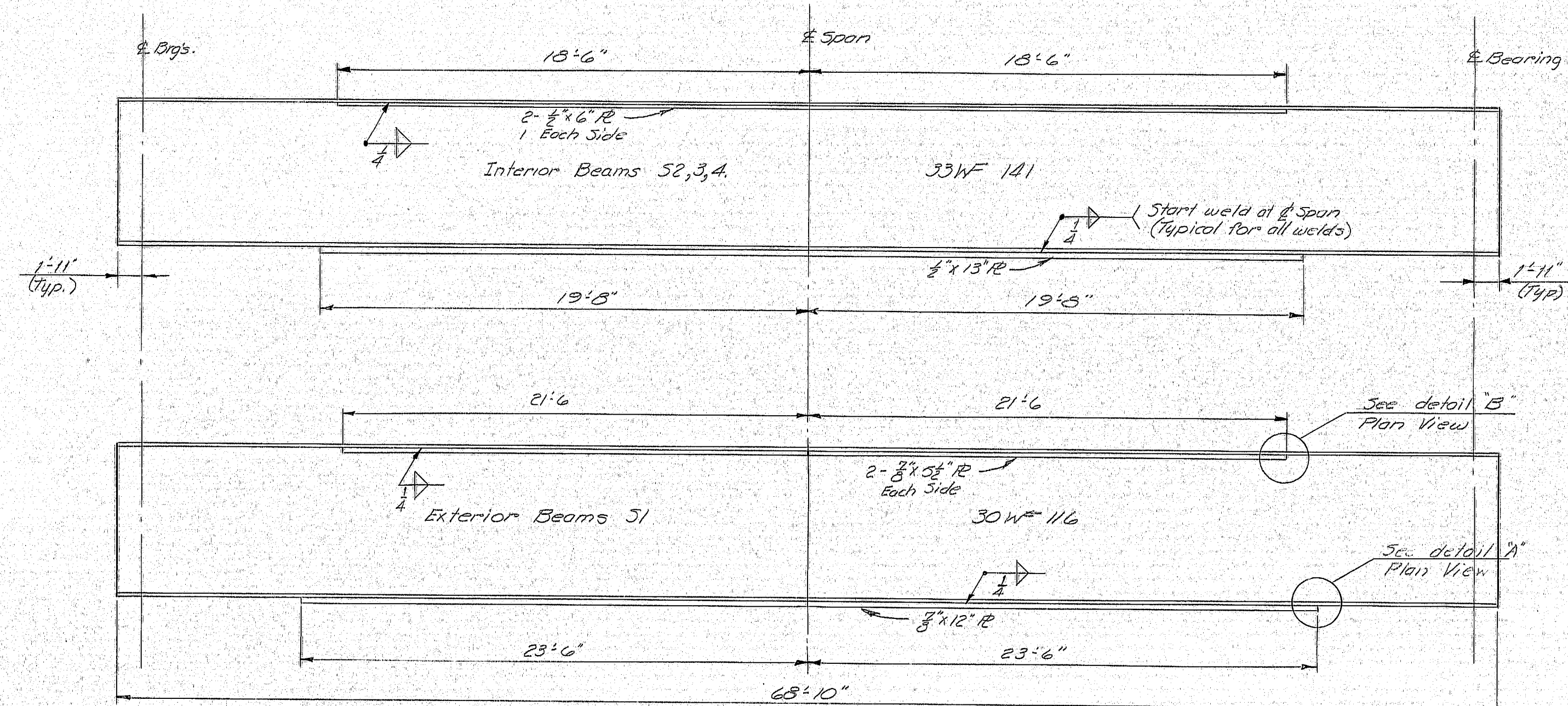
TRANSVERSE SECTION



TYPICAL SECTION

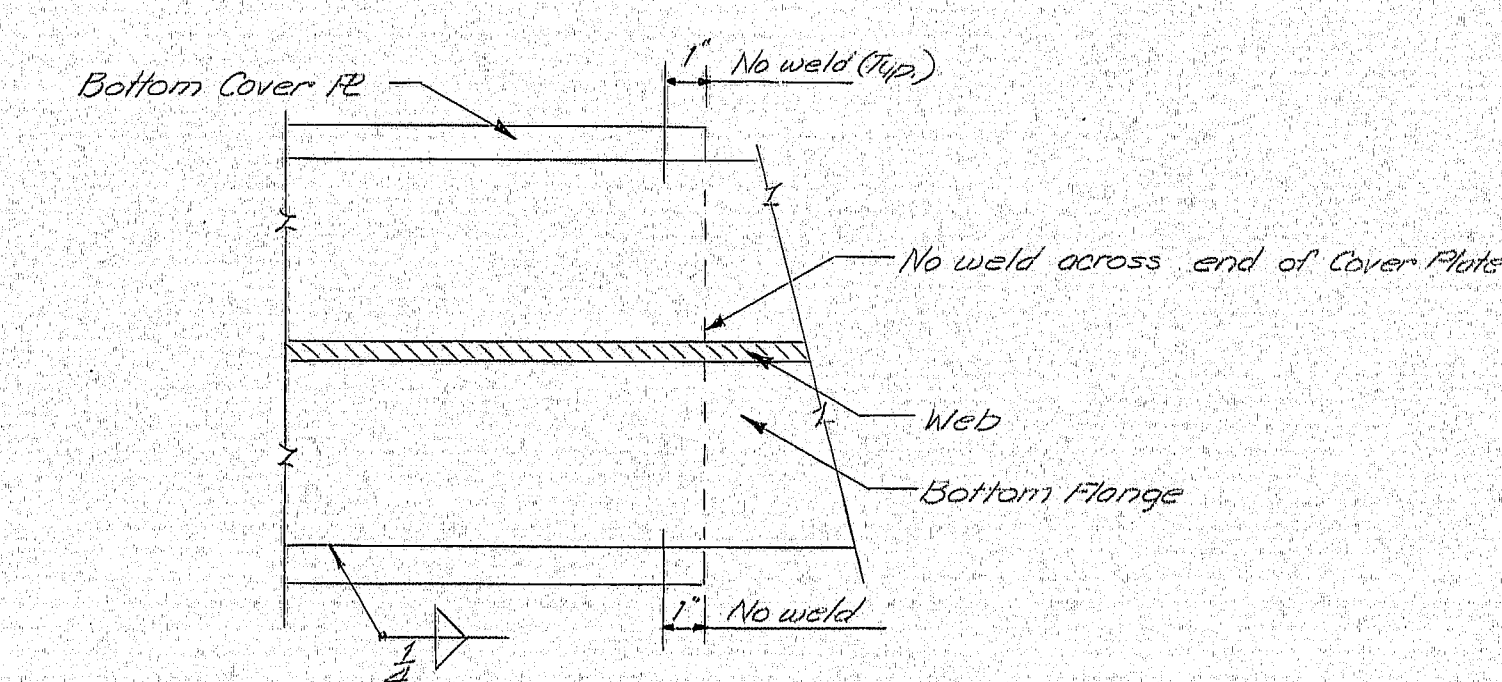


DETAIL "B" (Plan View)



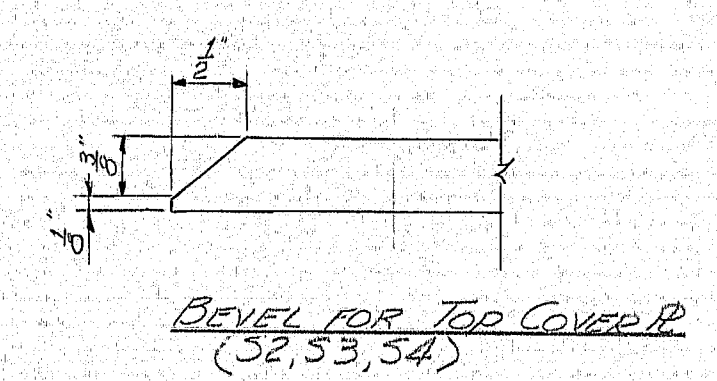
ELEVATIONS

NOTE: In case of interference between Cover IR and diaphragm connection angles, clip the top of the connection angles as necessary to clear.

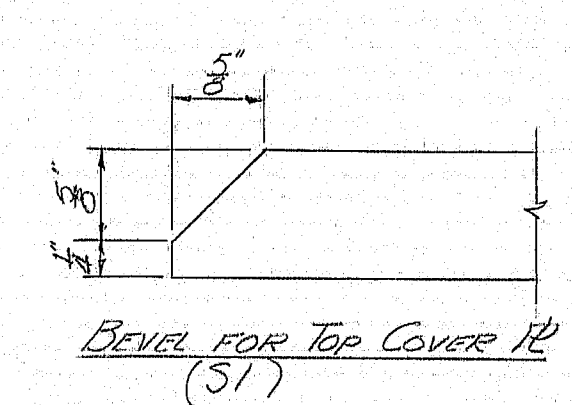


DETAIL "A" (Plan View)
(Typical)

Construction Note:
Removal of Existing Deck and installation of new deck should start at midpoint of bridge and proceed symmetrically from there in order that settling on the top flange cover IR's may proceed symmetrically.



BEVEL FOR TOP COVER IR
(S2, S3, S4)



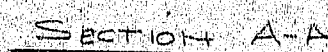
BEVEL FOR TOP COVER IR
(S1)

DATE	BY	DESIGN - RETAINED	CHECKED	REVISIONS	FIELD CHANGES
12/27/77	W. J. [illegible]				

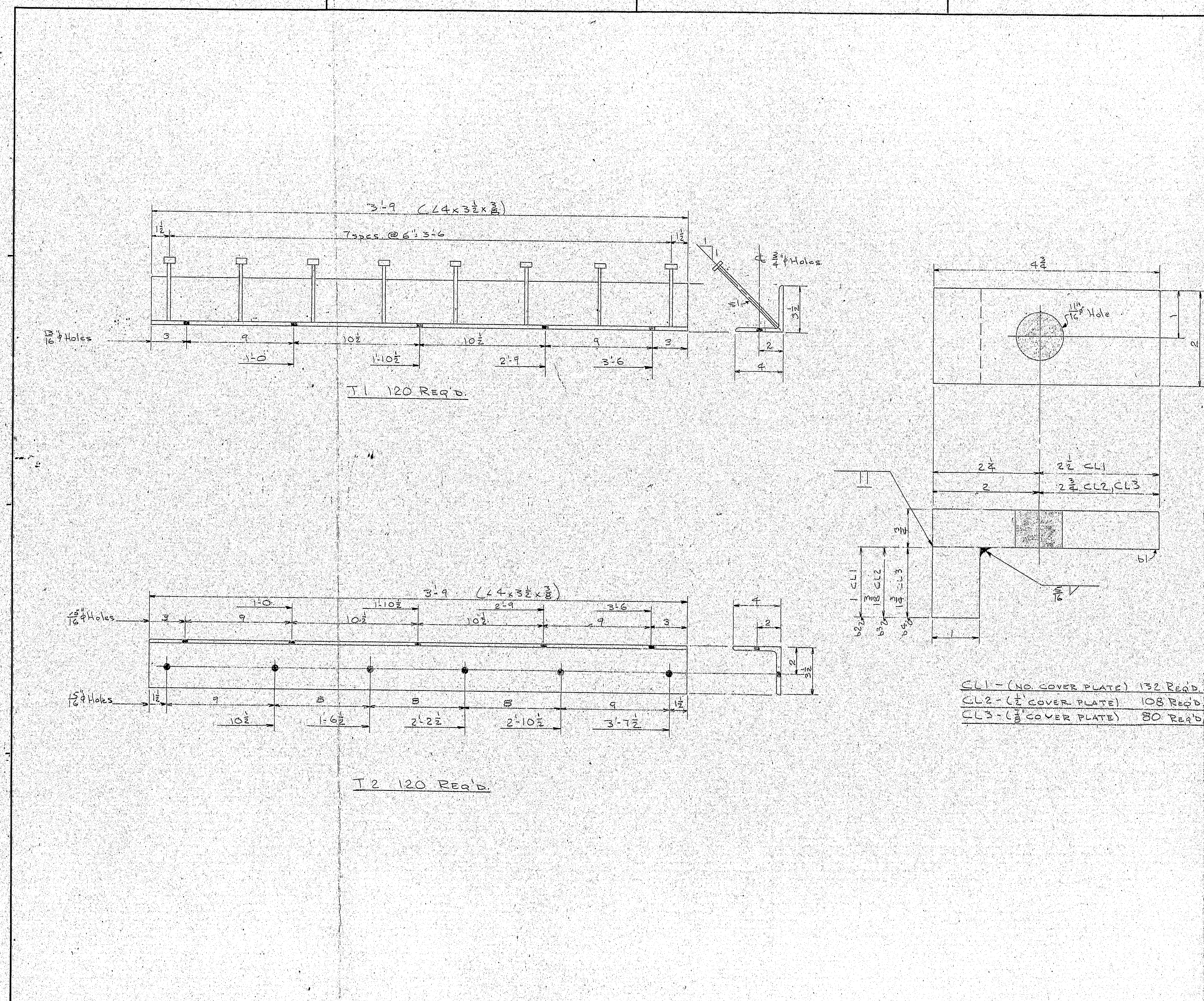
PLANS

STATE OF MAINE
DEPARTMENT OF TRANSPORTATION
HUNTER COVE BRIDGE
OVER
HUNTER COVE
IN THE TOWN OF
RANGELEY
FRANKLIN COUNTY
Beam Reinforcement
SHEET 3 OF 3 AUGUSTA, MAINE

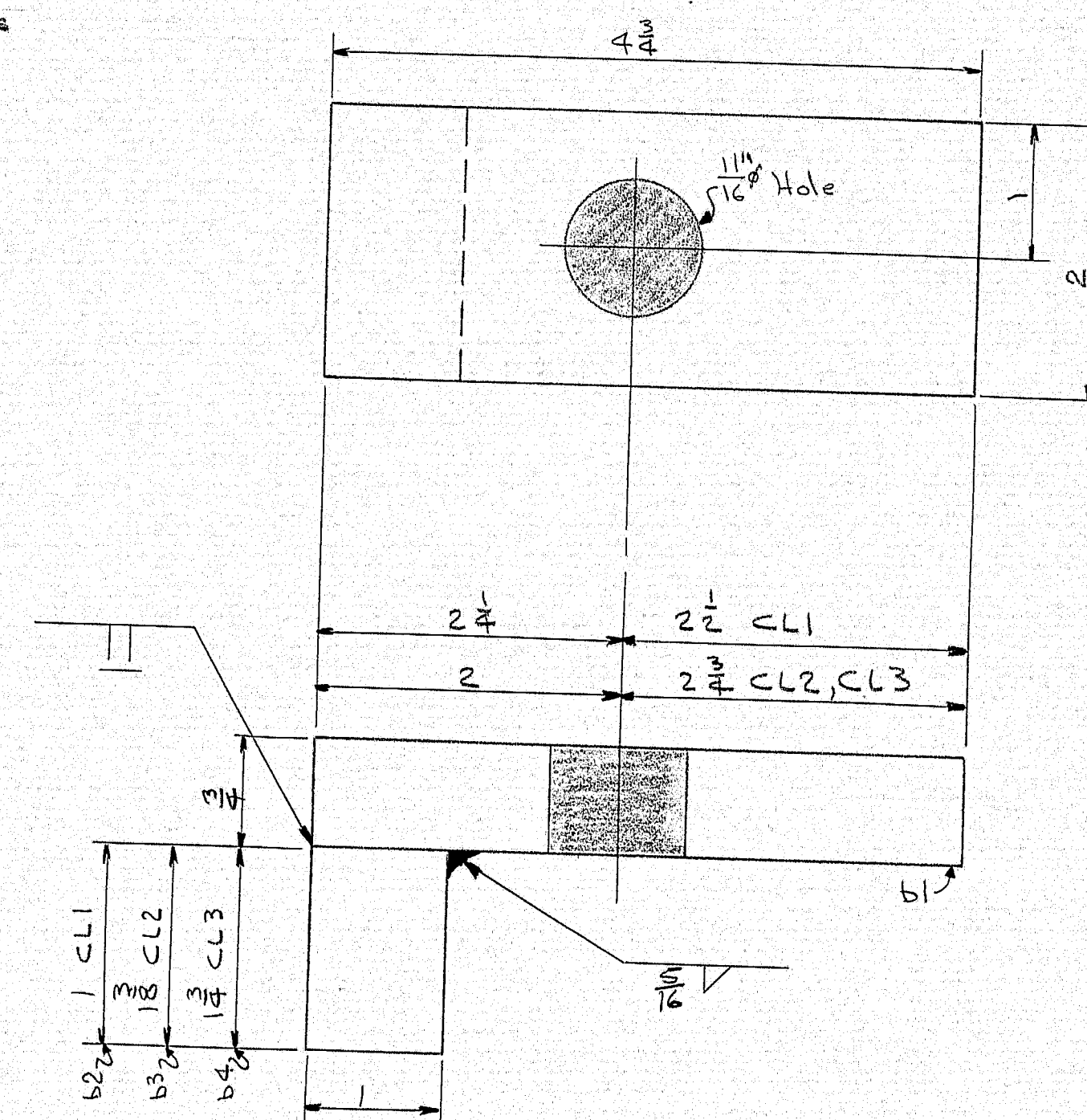
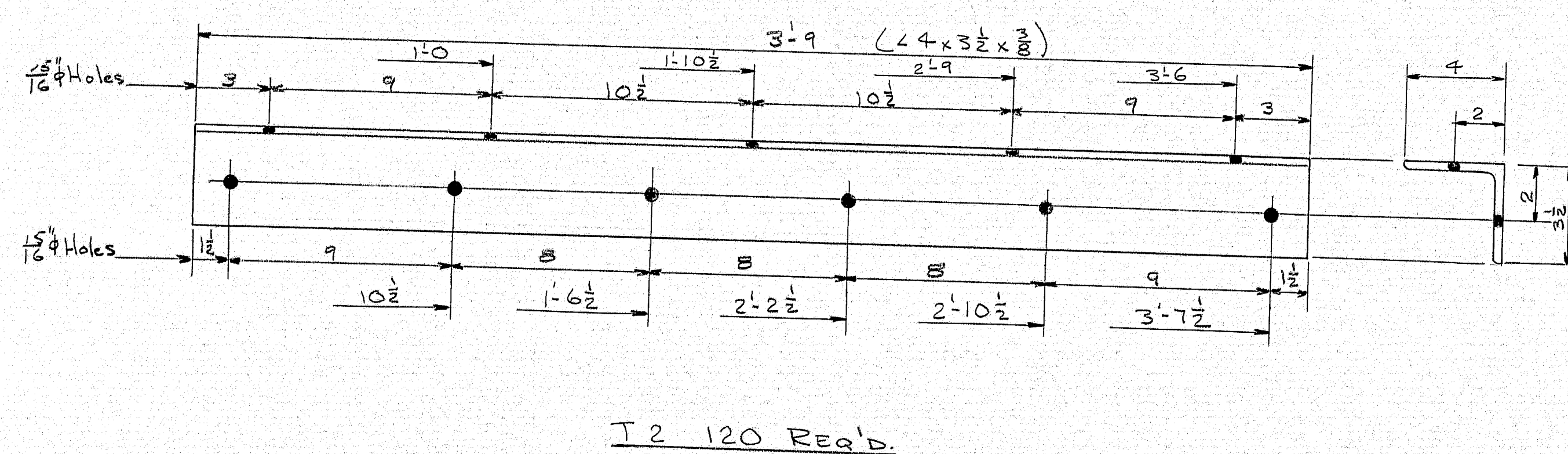
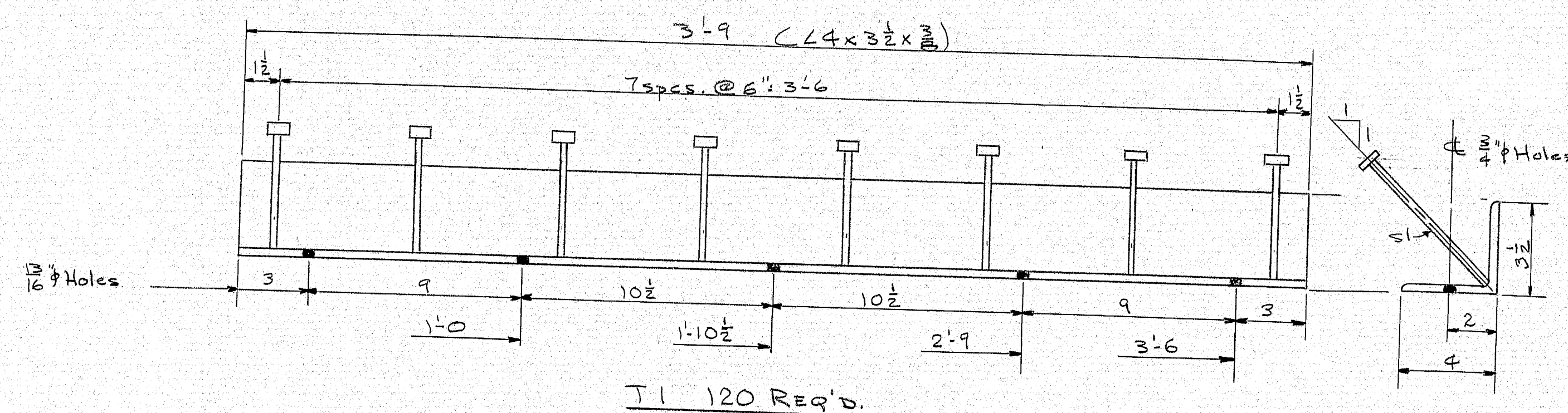
117425754



143-8



SHIP		BILL OF MATERIAL			JOB NO. 73-599		DWG. NO. 61-1	
MARK	NO.	MARK	SHAPE	LENGTH	WT.	ITEM NO.	REMARKS	
T1	120		14x3 1/2 x 3/8	3' 9"				
	960	51	2 1/2" Stud Anchors	0' 6"				
T2	120		24x3 1/2 x 3/8	3' 9"				
CL1	132		Bar 2 x 3/8	0' 4 1/2"				
CL2	108		Do	0' 4 1/2"				
CL3	80		Do	0' 4 1/2"				
	132	b2	Bar 1 x 1	0' 2"				
	108	b3	Bar 1 1/2 x 1	0' 2"				
	80	b4	Bar 1 1/2 x 1	0' 2"				
				</				



CL1 - (NO COVER PLATE) 132 Req'd.
 CL2 - (1/2" COVER PLATE) 108 Req'd.
 CL3 - (1/2" COVER PLATE) 80 Req'd.

SHIP		BILL OF MATERIAL			JOB NO. 73-599		DWG. NO. 61-1	
MARK	NO.	MARK	SHAPE	LENGTH	WT.	ITEM NO.	REMARKS	
T1	120		L4x3 1/2x 3/8	3' 9"				
	960	51	1/2" Stud Anchors	0	6			
T2	120		L4x3 1/2x 3/8	3' 9"				
CL1	132		Bar 2x 3/4	0	4 3/4			
CL2	108		Do	0	4 3/4			
CL3	80		Do	0	4 3/4			
	132	52	Bar 1x1	0	2			
	108	53	Bar 1x1	0	2			
	80	54	Bar 1 1/2x1	0	2			
STATE PROJ. NO.: 2384								
STEEL: ASTM A36 WELDING ELECTRODE See Welding Procedures SHOP CONN: Welded FIELD CONN: Bolted HOLES: As Noted PAINT: None SPECIAL CLEANING: None APPROVED:								
ANGLES T1 & T2 CLAMPS CL1, CL2, & CL3								
PRINT DIST.			Bancroft & Martin Inc. South Portland, Maine 04106					
4	11/13/73	Shop						
2	11/13/73	Field	JOB: HUNTER COVE BRIDGE RANGLEY, MAINE					
			CUSTOMER: Dept. of Trans. - Br. Maint. Div.					
			DESIGNER: Do					
			ORDER NO.		JOB NO.		DRAWING NO.	
			19-13921		73-599		61-1	
REV. CHECKED DRAWN			11/12/73		gac			

153-189